

# PHONE BID AUCTION

ends Thursday, March 20<sup>th</sup> at 4pm

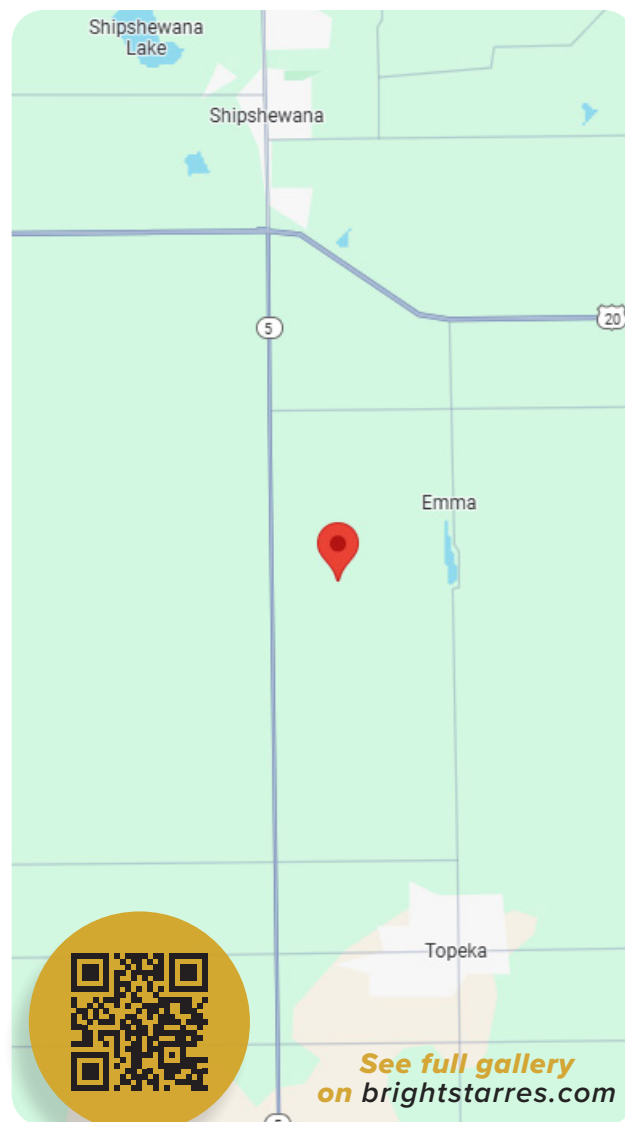
Check out the property anytime during daylight hours!

SELLER: Isaiah Lambright

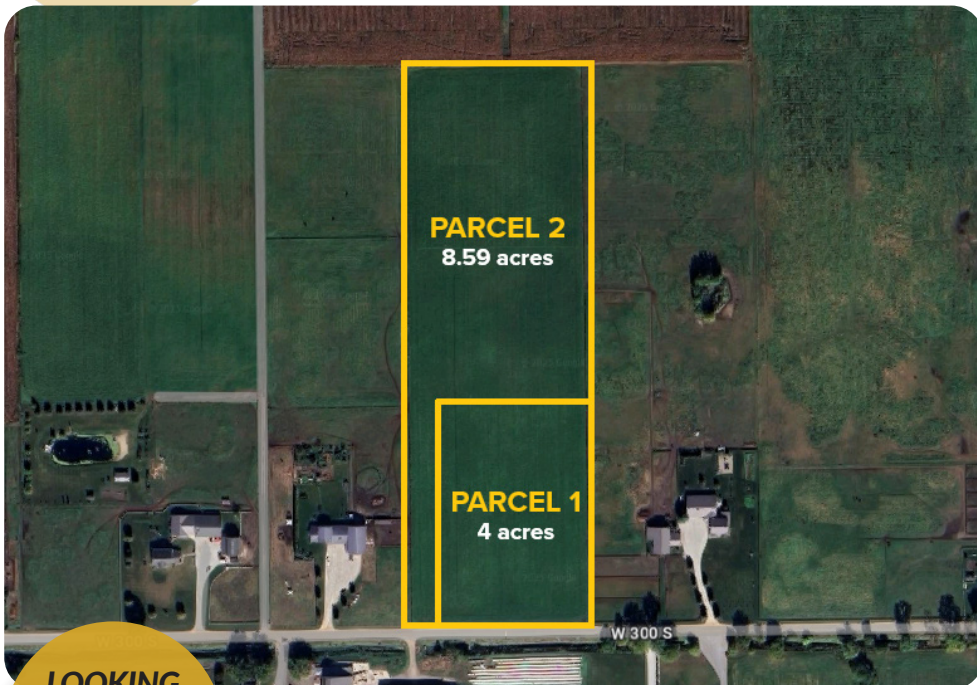
12.59 acres  
**MULTI-PARCEL  
VACANT LAND**  
in **TOPEKA**

**VL W 300 S**  
Topeka, IN 46571

Located less than 1 mile east of IN-5, six miles north of Topeka and six miles south of Shipshewana.



See full gallery  
on [brightstarres.com](http://brightstarres.com)



LOOKING  
FOR ACREAGE?  
BUILDABLE  
LAND?

Located on a quiet back road with views for miles with wide open, level build sites. Build your dream home within easy driving distance of both Topeka and Shipshewana.

## PARCEL 1

STARTING BID OF \$60,000

## PARCEL 2

STARTING BID OF \$120,000

Two parcels up for auction, to be sold together or individually to the highest winning combination of bids.



TO PLACE BIDS, CALL  
**JESSE RIEGSECKER**  
(574) 612-7277  
Broker, Auctioneer



FOR PROPERTY INFO, CALL  
**LEON KRAMER**  
(260) 463-1446  
Broker, Auction Manager

5% down day of auction, non-refundable. Balance due at closing in approximately 45 days.  
Property lines drawn are approximate. Property to sell per seller's confirmation.

