

LIVE AUCTION

Thursday, March 7th at 6 p.m.

OPEN HOUSES: Thursday (Feb 15, Feb 22, Feb 29) from 4:30 to 6:30 p.m.

Joshua & Jessica Berkshire

4 acres CONTEMPORARY FOUR-SQUARE FARMHOUSE

18101 Riley Rd
Bremen, IN 46506

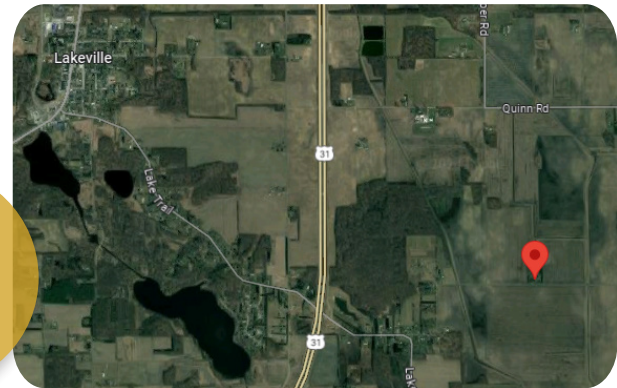
Located just over a mile off of US-31,
and 3.6 miles west of Bremen Highway.



Don't miss this renovated four-square style farmhouse on premium property! The generous, open-concept layout on the main level offers plenty of room for family and friends. You'll still be able to find a quiet moment alone, though, because every bedroom has a balcony overlooking the property and its apple, pear, and cherry trees.

PROPERTY HIGHLIGHTS

- Four acres of tree-lined property
- Trees, etc.: apples, pears, cherries, blueberries, grapes
- Blacktop driveway to detached garage



HOME 3 bd, 3 bth

- Estimated 2,300 sq. ft., finished
- Open-concept main level
- Large primary suite with two vanities, custom walk-in shower, laundry, rooftop balcony
- Each bedroom has a balcony!
- Exterior: new metal siding, cedar accents, stamped patio, covered front porch

DETACHED GARAGE

- Estimated 30' x 48'
- Two overhead doors
- Plenty of attic space
- Insulated, Floor drains, and Electric
- Wood-burning stove

LEAN-TO

- Estimated 20' x 20'
- Currently used as a chicken coop
- Fenced run for chickens
- Could convert to use for other animals



Main Office
(574) 821-7653
AC32100007



Rich Carpenter
(269) 340-2261
Broker, Auction Manager

5% down day of auction, non-refundable. Balance due at closing in approximately 30 days.
Statements made day of auction may supersede printed statements. Property to sell per seller's confirmation.

